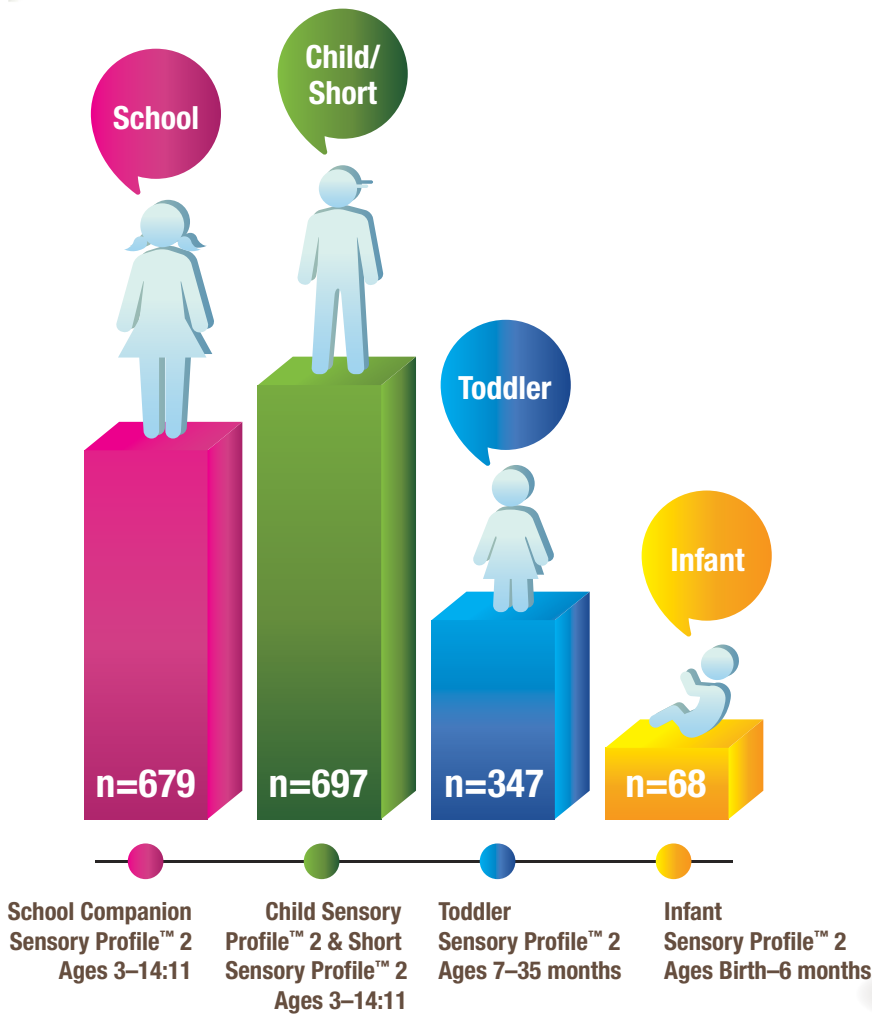


DEMOGRAPHICS



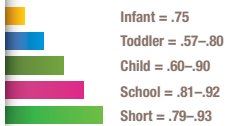
1,791 DEMOGRAPHICALLY REPRESENTATIVE CHILDREN AGES BIRTH THROUGH 14:11



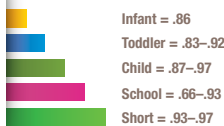
- 337 children rated on both the Child Sensory Profile™ 2 and School Companion Sensory Profile™ 2
- 898 boys and 893 girls
- 10% of standardization sample included children with vulnerable conditions, closely matching their incidence in the general population

RELIABILITY

INTERNAL CONSISTENCY



TEST-RETEST RELIABILITY



INTER-RATER RELIABILITY



TECHNICAL SUMMARY

VALIDITY

CLINICAL GROUPS



(n=774 children with vulnerable conditions matched with 774 children without disabilities):

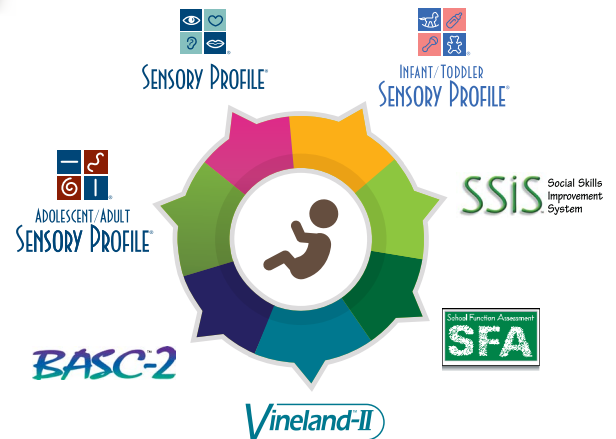
Significant differences between typically developing matched peers and key vulnerable groups:

- Developmental delay and Toddler form
- Autism and Child/Short forms
- Attention deficit/hyperactivity disorder (ADHD) and Child/Short forms
- Dual diagnosis of autism and ADHD and Child/Short forms
- Learning disability and School form



Note: Short Sensory Profile 2 discriminates on a similar pattern to Child Sensory Profile™ 2

CORRELATION STUDIES WITH OTHER MEASURES



For further information including author podcasts visit SensoryProfile.com

800.627.7271 | PsychCorp | PearsonClinical.com