



The image shows the front cover of the 'Overview of Millon Adolescent Clinical Inventory (MACI)' manual. The cover is split into two main sections. The left section has a light blue background and contains the Pearson logo at the top left, followed by the title 'Overview of Millon Adolescent Clinical Inventory (MACI)' in large, bold, dark blue font. Below the title, the authors' names 'Robert Tringone, Ph.D.' and 'Gloria Maccow, Ph.D.' are listed. The right section has a white background and features the MACI logo at the top, which consists of a stylized 'm' inside a circle. To the right of the logo, the text reads 'MACI™ MILLON™ ADOLESCENT CLINICAL INVENTORY by Theodore Millon, PhD, DSc, with Carrie Millon, PhD, Roger Davis, PhD, and Seth Grossman, PsyD'. Below this text is a colorful graphic of three stylized human figures in red, green, and blue, set against a background of horizontal lines.

Agenda

1. Describe features of the MACI.
2. Link personality patterns scales to Millon's evolutionary theory.
3. Interpret sample MACI profile.

Overview

Self-Report Inventory

Consists of 160 items
(True-False)

Assesses personality patterns, clinical syndromes, and expressed concerns.

Developed for use in clinical, residential, and correctional settings.

Used for evaluation, diagnosis, and treatment planning.

Norms based on clinical samples of 13-to-19-year-olds.



MACI

MACI Scales

MACI Scales

Expressed Concerns
(8 scales)

Clinical Syndromes
(7 scales)

Personality Patterns
(12 scales)

Modifying Indices

MACI Expressed Concerns Scales

Scale	MACI Expressed Concern	alpha
A	Identity Diffusion	.79
B	Self-Devaluation	.91
C	Body Disapproval	.85
D	Sexual Discomfort	.73
E	Peer Insecurity	.75
F	Social Insensitivity	.79
G	Family Discord	.79
H	Childhood Abuse	.83

MACI Clinical Syndromes Scales

Scale	MACI Clinical Syndrome	alpha
AA	Eating Dysfunctions	.86
BB	Substance-Abuse Proneness	.89
CC	Delinquent Predisposition	.77
DD	Impulsive Propensity	.79
EE	Anxious Feelings	.75
FF	Depressive Affect	.89
GG	Suicidal Tendency	.77

MACI Personality Patterns Scales

Scale	MACI Personality Pattern	Parallel DSM Disorder	alpha
1	Introversive	Schizoid	.83
2A	Inhibited	Avoidant	.86
2B	Doleful	Depressive	.86
3	Submissive	Dependent	.74
4	Dramatizing	Histrionic	.82
5	Egotistic	Narcissistic	.80
6A	Unruly	Antisocial	.84
6B	Forceful	Sadistic	.83
7	Conforming	Compulsive	.86
8A	Oppositional	Negativistic	.85
8B	Self-Demeaning	Masochistic	.90
9	Borderline Tendency	Borderline	.86

Development of MACI Personality Patterns

Evolutionary Theory

Functional and Structural
Domains of Personality

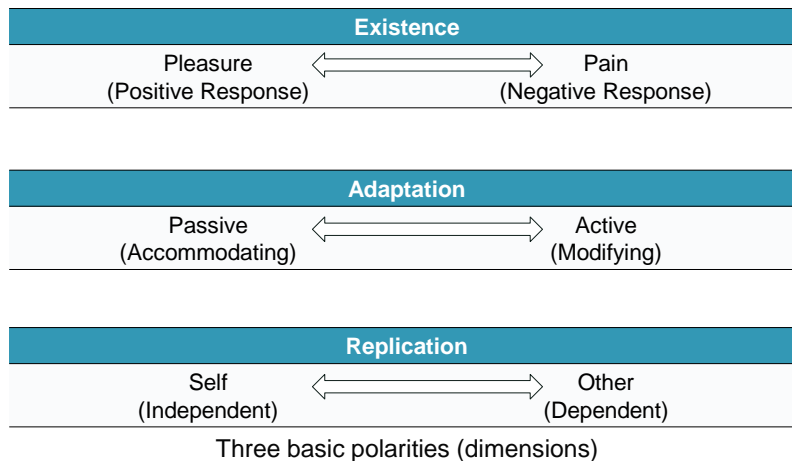


Evolutionary Theory

Personality Patterns

Learned strategies to secure positive reinforcement and minimize punishment.

Evolutionary Theory of Personality Patterns



Concepts of Normality and Pathology

Adaptive individuals demonstrate reasonable balance, flexibility, and adaptiveness across the three polarities:

- capable of both active and passive adaptation;
- mildly motivated toward pleasure and away from pain;
- gratified by both self and others.

Maladaptive personalities show one to several imbalances or conflicts on the polarities:

- overly passive or active;
- strongly motivated to avoid pain but not seek pleasure;
- overly reliant on self or others.

The Polarities and MACI Personality Pattern Scales

The polarities were combined to derive . . . personality pattern scales that parallel many of the personality disorders recognized by the Diagnostic and Statistical Manual.

Interpersonally Imbalanced Personality Patterns

		Self-Other	
		Self (low) Other (high) Dependent Personalities	Self (high) Other (low) Independent Personalities
		Personality Patterns	
Passive		Submissive	Egotistic
Active		Dramatizing	Unruly

Intrapsychically Conflicted Personality Patterns

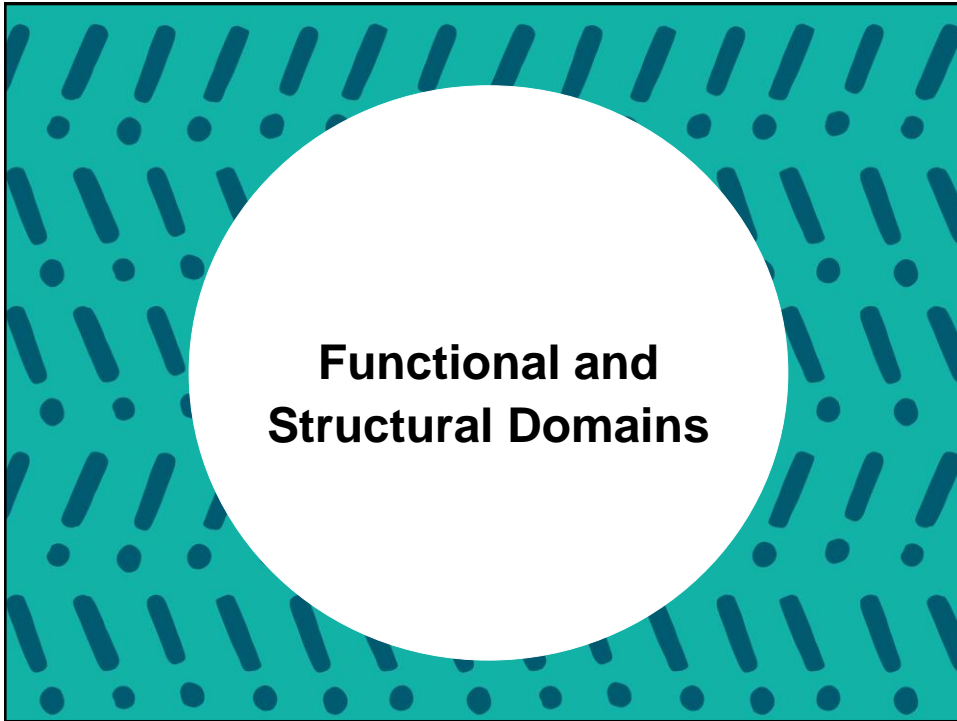
		Self-Other	Pleasure-Pain
		Self-Other Discordance	Pleasure-Pain Reversal
		Personality Patterns	Personality Patterns
Passive		Conforming	Self-Demeaning
Active		Oppositional	Forceful

Detached Personality Patterns

		Pleasure-Pain
		Pleasure (low) Pain (low or high)
		Personality Patterns
Passive		Introversive (low pleasure, low pain)
		Doleful (low pleasure, high pain)
Active		Inhibited (low pleasure, high pain)

Evolutionary Model and Personality Patterns: Structural Pathology

Borderline Tendency



Domains of Personality

Level	Functional Domains	Structural Domains
Behavioral	Expressive Behavior Interpersonal Conduct	
Phenomenological	Cognitive Style	Self-Image Object Representations
Intrapsychic	Regulatory Mechanisms	Morphologic Organization
Biophysical		Mood/Temperament

Overview of Millon Adolescent Clinical Inventory (MACI)
Robert Tringone, Ph.D., and Gloria Maccow, Ph.D.

Expression of MACI Personality Patterns Across Functional and Structural Domains

MACI Personality Pattern	Functional Domains				Structural Domains			
	Expressive Behavior	Interpersonal Conduct	Cognitive Style	Regulatory Mechanisms	Self-image	Object Representations	Morphologic Organization	Mood/Temperament
Introversive	Impassive	Unengaged	Impoverished	Intellectualization	Complacent	Meager	Undifferentiated	Apathetic
Inhibited	Fretful	Aversive	Distracted	Fantasy	Alienated	Vexatious	Fragile	Anguished
Doleful	Disconsolate	Defenseless	Pessimistic	Asceticism	Worthless	Forsaken	Depleted	Woeful
Submissive	Incompetent	Docile	Naive	Introjection	Inept	Immature	Inchoate	Pacific
Dramatizing	Dramatic	Attention-Seeking	Flighty	Dissociation	Gregarious	Shallow	Disjointed	Fickle
Egotistic	Haughty	Exploitive	Expansive	Rationalization	Admirable	Contrived	Spurious	Insouciant
Unruly	Impulsive	Irresponsible	Deviant	Acting Out	Autonomous	Debased	Unruly	Callous
Forceful	Precipitate	Abrasive	Dogmatic	Isolation	Combative	Pernicious	Eruptive	Hostile
Conforming	Disciplined	Respectful	Constricted	Reaction Formation	Conscientious	Concealed	Compartmentalized	Solemn
Oppositional	Resentful	Contrary	Skeptical	Displacement	Discontented	Vacillating	Divergent	Imitable
Self-Demeaning	Abstinent	Deferential	Diffident	Exaggeration	Undeserving	Discredited	Inverted	Dysphoric
Borderline Tendency	Spasmodic	Paradoxical	Capricious	Regression	Uncertain	Incompatible	Split	Labile



MACI

Grossman Facet Scales

- | | | |
|--|--|--|
| <p>1 Introversive</p> <p>1.1 Expressively Impassive
1.2 Temperamentally Apathetic
1.3 Interpersonally Unengaged</p> | <p>4 Dramatizing</p> <p>4.1 Interpersonally Attention-Seeking
4.2 Gregarious Self-Image
4.3 Cognitively Flighty</p> | <p>7 Conforming</p> <p>7.1 Expressively Disciplined
7.2 Interpersonally Respectful
7.3 Conscientious Self-Image</p> |
| <p>2A Inhibited</p> <p>2A.1 Expressively Fretful
2A.2 Interpersonally Aversive
2A.3 Alienated Self-Image</p> | <p>5 Egotistic</p> <p>5.1 Admirable Self-Image
5.2 Cognitively Expansive
5.3 Interpersonally Exploitive</p> | <p>8A Oppositional</p> <p>8A.1 Discontented Self-Image
8A.2 Expressively Resentful
8A.3 Interpersonally Contrary</p> |
| <p>2B Doleful</p> <p>2B.1 Temperamentally Woeful
2B.2 Expressively Disconsolate
2B.3 Cognitively Pessimistic</p> | <p>6A Unruly</p> <p>6A.1 Expressively Impulsive
6A.2 Acting-Out Mechanism
6A.3 Interpersonally Irresponsible</p> | <p>8B Self-Demeaning</p> <p>8B.1 Cognitively Diffident
8B.2 Undeserving Self-Image
8B.3 Temperamentally Dysphoric</p> |
| <p>3 Submissive</p> <p>3.1 Interpersonally Docile
3.2 Temperamentally Pacific
3.3 Expressively Incompetent</p> | <p>6B Forceful</p> <p>6B.1 Interpersonally Abrasive
6B.2 Expressively Precipitate
6B.3 Isolation Mechanism</p> | <p>9 Borderline Tendency</p> <p>9.1 Temperamentally Labile
9.2 Cognitively Capricious
9.3 Uncertain Self-Image</p> |



MACI

Modifying Indices

Scale	MACI Modifying Index	# of Items	alpha
X	Disclosure	a	--
Y	Desirability	17	.93
Z	Debasement	16	.87
W	Reliability	2	

^a. Score calculated from scale raw scores, not items.



**Administration,
Scoring, Interpretation**

Administration


English

Spanish

Paper and Pencil

Computer

Audio Recordings Available

 Pearson


MACI

Scoring

Computer Scoring
(Q-global®, Q Local™, Mail-in)

- Interpretive Report
- Profile Report

Hand Scoring

 Pearson

MACI

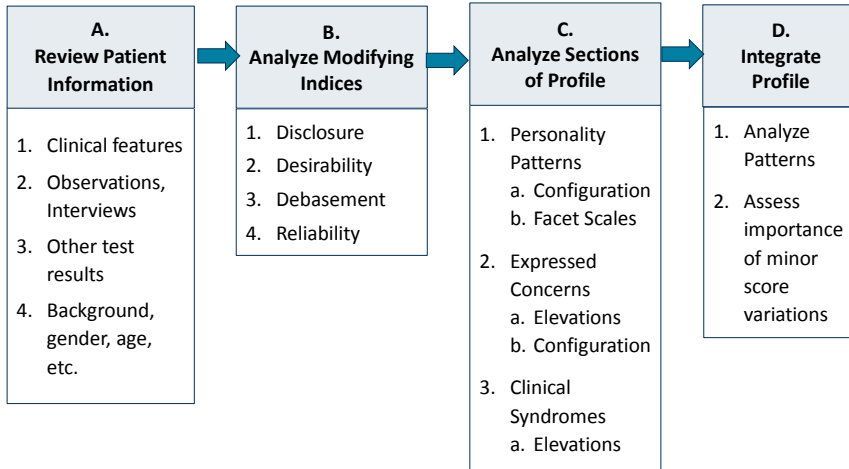
Base Rate Scores

- Based on prevalence rate of personality pattern
- Derived according to raw score distribution
- Attached to "anchor points:" 115, 85, 75
- Gauge presence and severity of patterns, pathologies, and syndromes
- Unrelated to T-scores

Base Rate Scores

Base Rate	Interpretation/ Interpretive Benchmarks
60-74	Possible presence of traits at the domain level.
75-84	Likely psychopathology is present. May be at trait level.
85+	Presence of Personality Pattern likely at an impairing level.

MACI Interpretive Model



Demographics



MACI®
Millon® Adolescent Clinical Inventory
Interpretive Report with Grossman Facet Scales
Theodore Millon, PhD, DSc

Name:	Samantha J. Sample
ID Number:	79457
Age:	16
Gender:	Female
Education:	High School Sophomore
Date Assessed:	03/02/2014

Patient Information

- Parents divorced 3 years ago.
- Samantha blames mother for divorce, and defies mother's rules.
- Recently started dating a 19-year-old high school dropout who sells drugs.
- Samantha has used drugs and alcohol.
- Received two speeding tickets and was arrested for driving under the influence.

Modifying Indices

RELIABILITY (SCALE VV) SCORE = 0

This is a valid profile.

CATEGORY		SCORE		PROFILE OF BR SCORES				DIAGNOSTIC SCALES
		RAW	BR	0	60	75	85	
MODIFYING INDICES	X	465	83					DISCLOSURE
	Y	16	95					DESIRABILITY
	Z	8	64					DEBASEMENT

Note: A profile is considered invalid if:

- Raw score on Reliability Scale (VV) is 2.
- Raw score on Scale X (Disclosure) is less than 201 or greater than 589.

Personality Patterns

CATEGORY	SCORE		PROFILE OF BR SCORES					DIAGNOSTIC SCALES	
	RAW	BR	0	60	75	85	115		
PERSONALITY PATTERNS	1	24	37						INTROVERSIVE
	2A	21	38						INHIBITED
	2B	24	66						DOLEFUL
	3	45	48						SUBMISSIVE
	4	52	73						DRAMATIZING
	5	44	64						EGOTISTIC
	6A	48	76						UNRULY
	6B	27	80						FORCEFUL
	7	37	35						CONFORMING
	8A	45	85						OPPOSITIONAL
8B	38	68						SELF-DEMEANING	
9	17	47						BORDERLINE TENDENCY	



MACI

FACET SCORES FOR HIGHEST PERSONALITY SCALES BR 65 OR HIGHER

HIGHEST PERSONALITY SCALE BR 65 OR HIGHER: SCALE 8A Oppositional **BR 85**

SCALE	SCORE		PROFILE OF BR SCORES						FACET SCALES
	RAW	BR	0	60	70	80	90	100	
8A.1	2	47							Discontented Self-Image
8A.2	7	83							Expressively Resentful
8A.3	8	88							Interpersonally Contrary

SECOND-HIGHEST PERSONALITY SCALE BR 65 OR HIGHER: SCALE 6B Forceful **BR 80**

SCALE	SCORE		PROFILE OF BR SCORES						FACET SCALES
	RAW	BR	0	60	70	80	90	100	
6B.1	4	82							Interpersonally Abrasive
6B.2	6	88							Expressively Precipitate
6B.3	3	79							Isolation Mechanism

THIRD-HIGHEST PERSONALITY SCALE BR 65 OR HIGHER: SCALE 6A Unruly **BR 76**

SCALE	SCORE		PROFILE OF BR SCORES						FACET SCALES
	RAW	BR	0	60	70	80	90	100	
6A.1	7	86							Expressively Impulsive
6A.2	6	66							Acting-Out Mechanism
6A.3	5	69							Interpersonally Irresponsible



MACI

Expressed Concerns

CATEGORY	SCORE		PROFILE OF BR SCORES				DIAGNOSTIC SCALES	
	RAW	BR	0	60	75	85		115
EXPRESSED CONCERNS	A	15	45					IDENTITY DIFFUSION
	B	37	73					SELF-DEVALUATION
	C	15	48					BODY DISAPPROVAL
	D	20	38					SEXUAL DISCOMFORT
	E	4	25					PEER INSECURITY
	F	37	82					SOCIAL INSENSITIVITY
	G	23	90					FAMILY DISCORD
	H	10	37					CHILDHOOD ABUSE



MACI

Clinical Syndromes

CATEGORY	SCORE		PROFILE OF BR SCORES				DIAGNOSTIC SCALES	
	RAW	BR	0	60	75	85		115
CLINICAL SYNDROMES	AA	26	58					EATING DYSFUNCTIONS
	BB	39	82					SUBSTANCE-ABUSE PRONENESS
	CC	35	83					DELINQUENT PREDISPOSITION
	DD	29	85					IMPULSIVE PROPENSITY
	EE	28	59					ANXIOUS FEELINGS
	FF	19	80					DEPRESSIVE AFFECT
	GG	11	35					SUICIDAL TENDENCY



MACI

Therapeutic Implications

- Consider the possibility of an acute alcohol- or drug-abuse problem.
- If verified, implement appropriate behavior management or group therapeutic programs.
- Also consider directive cognitive techniques and family therapy.



MACI

Training Opportunities

Online Training Available (earn up to 3 APA CE credits)

www.PearsonClinical.com/MACI

Participate in the Upcoming Revision?

- Looking for qualified users to collect data for the new revision of the MACI on [Q-global](#).
- If you are interested in participating, email us at clinsamp@pearson.com or call **1-800-233-5686**



MACI

Questions

References

Millon, T. (1969). *Modern psychopathology*. Philadelphia: Saunders.

Millon, T. (1981). *Disorders of personality: DSM-III, Axis II*. New York: Wiley.

Millon, T. (1990). *Toward a new personology: An evolutionary model*. New York: Wiley.

